



2005

The More Things
Change...

Wrestling

Photo by M. Widman

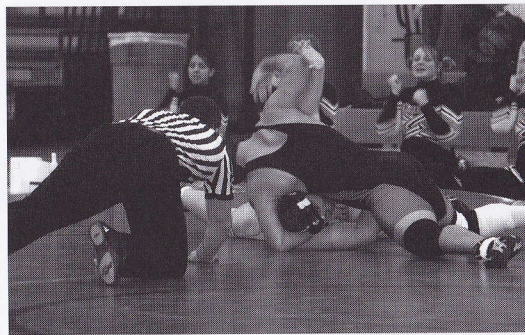
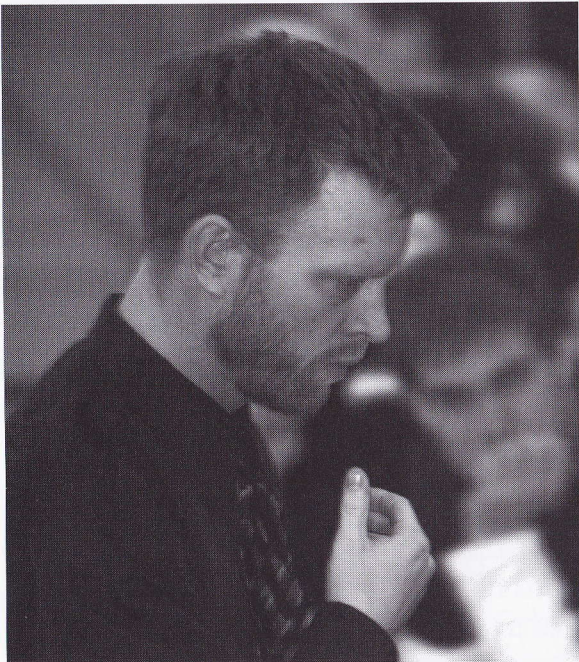


Photo by M. Widman

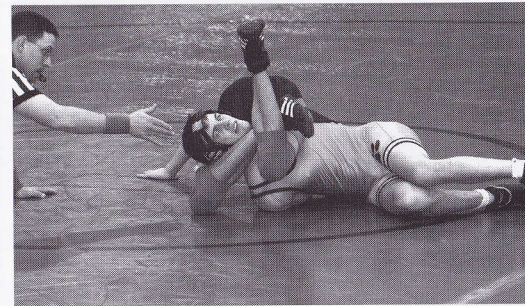


Photo by M. Widman

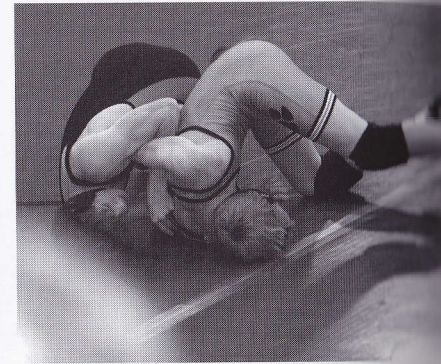


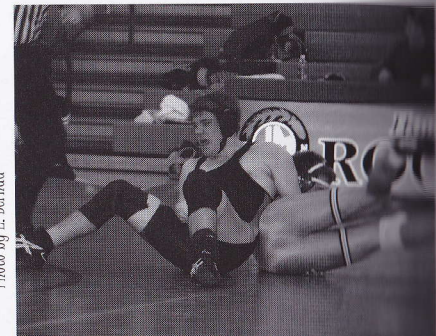
Photo by M. Widman

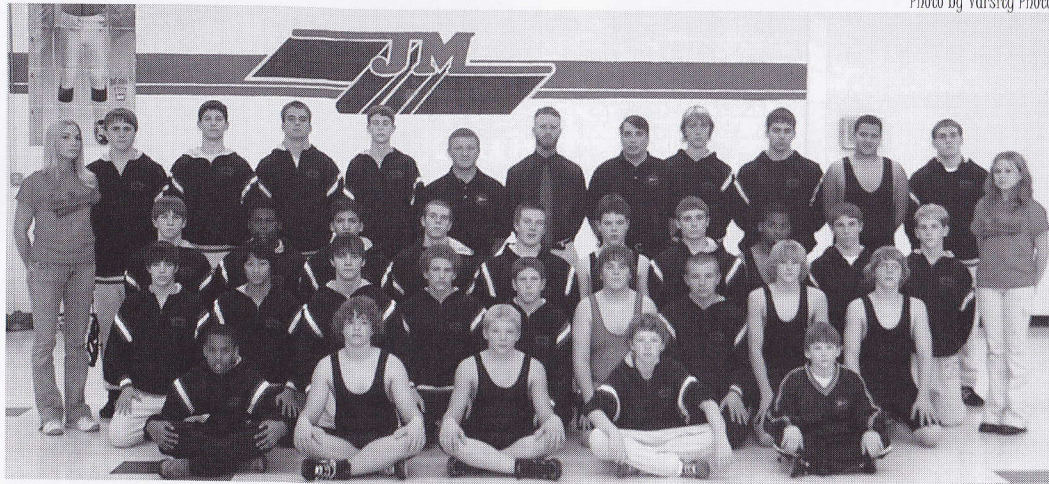
Above, Eric Bernau (11) puts his opponent in a double arm bar. Below, Pat Swayze (10) sits out and reverses his opponent. Opposite page: Team gets ready for match. Opposite top left corner, All Conference Captain Lance Rud leg rides his opponent. Opposite top right, Coach Haugen and Assistant Coach Robison concentrate while watching a match.

Above, Coach Haugen deep in thought strategizing what to do next. Clockwise right, Mike Hansen (12) pins his opponent with a half-nelson. Above right Mike Zenz (10) figure-fours his opponent's head with his legs. Right, team stands at attention looking at the American flag while the National Anthem is played before the Varsity match.



Photo by E. Bernau





Wrestling. Row 1: Willie Sanderfoot, Chad Bjorkman, Louks, Luke Robison, Garrett Steiger. Row 2: Taylor Giordano, Mony Chim, Lance Rud, Matt Borth, Justin Rae, Shawn Clarey, Kyle Louks, Paul Johnson, Tyler Lande. Row 3: Eric Bernau, DeShawn Goodman, Corey Kline, David Cannons, Andrew Peterson, Cole Swanson, Shaun Davis, Pen Maclin, Allen Vanderwiel, Nate Redmann. Row 4: Manager Ashlee Otterness, Matt Rud, Mike Zenz, Charlie Maves, Adam Simonson, Assistant Coach Rick Robison, Head Coach Brad Haugen, Assistant Coach Tom Giordano, Ben Hansen, Josh Waldee, Ian Naatz, Patrick Swayze, Manager Autumn Rife.

Scoreboard

Chatfield	36-45	L
Century	39-41	L
Mayo	25-46	L
Faribault	23-42	L
Mankato West	17-54	L
Prior Lake	30-40	L
Fairmont Invite	3rd Place	
Mankato East	13-60	L
Highland Park	43-32	L
St. Paul Central	58-21	W
St. Charles	36-37	L
LA/RP	35-45	L
Owatonna	21-56	L
Lakeville	27-51	L
Austin	12-51	L
Farmington	46-27	W
St. Croix Lutheran	2nd Place	
Century	46-33	W
Mayo	36-36	T
Albert Lea	0-81	L
Winona	50-22	W
Farmington	27-37	L

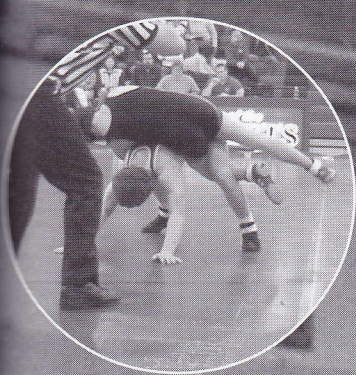


Photo by E. Becerra



Photo by M. Wademan

